

Overview

Healthy mule deer populations are essential to sustaining the ecological, economic, and cultural values of our western landscapes. Increasingly, scientists and wildlife managers are recognizing that the productivity of these herds depends on their ability to migrate seasonally across vast expanses of public and private lands.

In the northern Bighorn Mountains, Wyoming Game and Fish Department and partners have joined forces to fit 80 mule deer with satellite collars to map and study their movements in detail for the first time. This study will gather valuable information that can help stakeholders better understand mule deer seasonal habitats, habitat use and movement.

Armed with this information, decisions can be made with public and private land managers to conserve and improve habitats and migration corridors. It could also help inform potential transmission risks for Chronic Wasting Disease in this herd. Potential outcomes include habitat improvements, guidance for forest planning, fence modifications, conservation easements and modifications to hunting season structure.

Collared mule deer will complement existing projects with collared moose and elk occurring in the same areas.

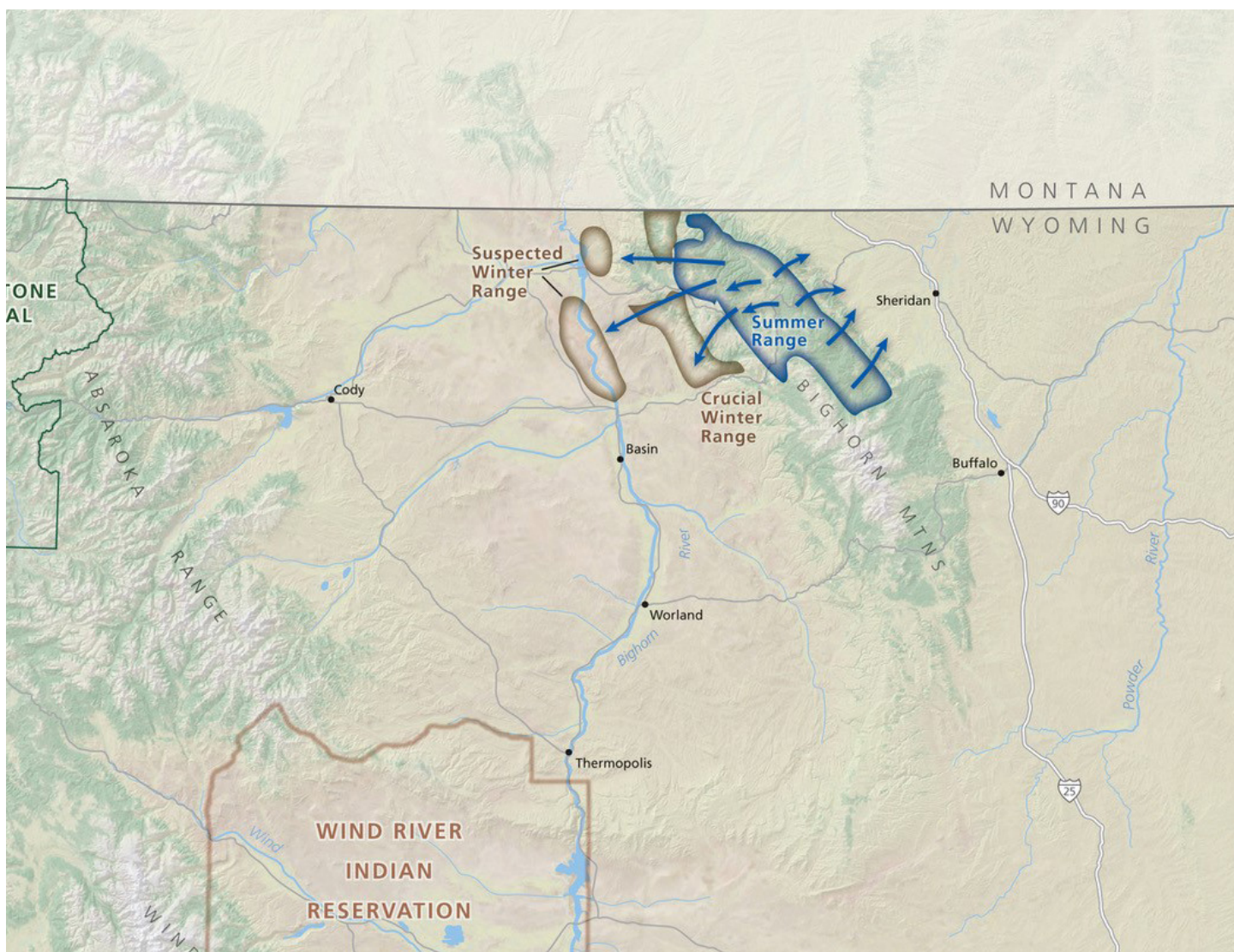
STUDY OBJECTIVES

Identify mule deer migration corridors

Evaluate seasonal range and habitat use

Identify habitat improvement and conservation opportunities

Document crude vital rates for North Bighorn mule deer



Draft Budget

	2020	2021	2022
Radiocollars	\$94,000	\$6,000	\$6,000
Helicopter Capture	\$48,000	\$9,000	\$9,000
Personnel, Travel, Supplies	\$15,000	\$50,000	\$45,000
Cost per year	\$157,000	\$65,000	\$60,000
TOTAL PROJECT COSTS	\$282,000		

Partners

- Wyoming Game and Fish Department
- Wyoming Migration Initiative
- Wyoming Cooperative Fish and Wildlife Research Unit
- The Nature Conservancy Wyoming
- Sheridan Community Land Trust

Want to Learn More?

Wyoming Game & Fish Department
 Tim Thomas, Wildlife Biologist
 Sheridan Region
 307-672-7418