

The Green Room Trail @ Malcolm Wallop Park

This trail exists thanks to the generosity of supporters who along with SCLT and the City of Sheridan facilitated the creation of this public park and voluntary conservation agreement, and allowed SCLT to build The Green Room Trail.

We are proud to build and maintain this trail. Please consider a supporting donation. Find out more at sheridanc.lt.org.

General Rules: Open daily from 6:30 a.m. to 10 p.m. No motorized vehicles. Pets must be leashed at all times on trail and inside park boundaries. Pet waste must be cleaned up and removed. All posted City of Sheridan park rules apply.

Directions from Sheridan: Follow North Main St. to north edge of town. Trail is located within Malcolm Wallop Park, north and west of Goose Creek. Turn west onto Real Bird Way. Continue to parking lot on south side of road. Trail is accessible from Sheridan Pathways (paved paths) in either direction. You can see trail and parking lot from North Main St.

Directions from I-90: Take Exit 20 south towards Sheridan. After about 0.6 miles, turn west onto Real Bird Way. Continue to parking lot.



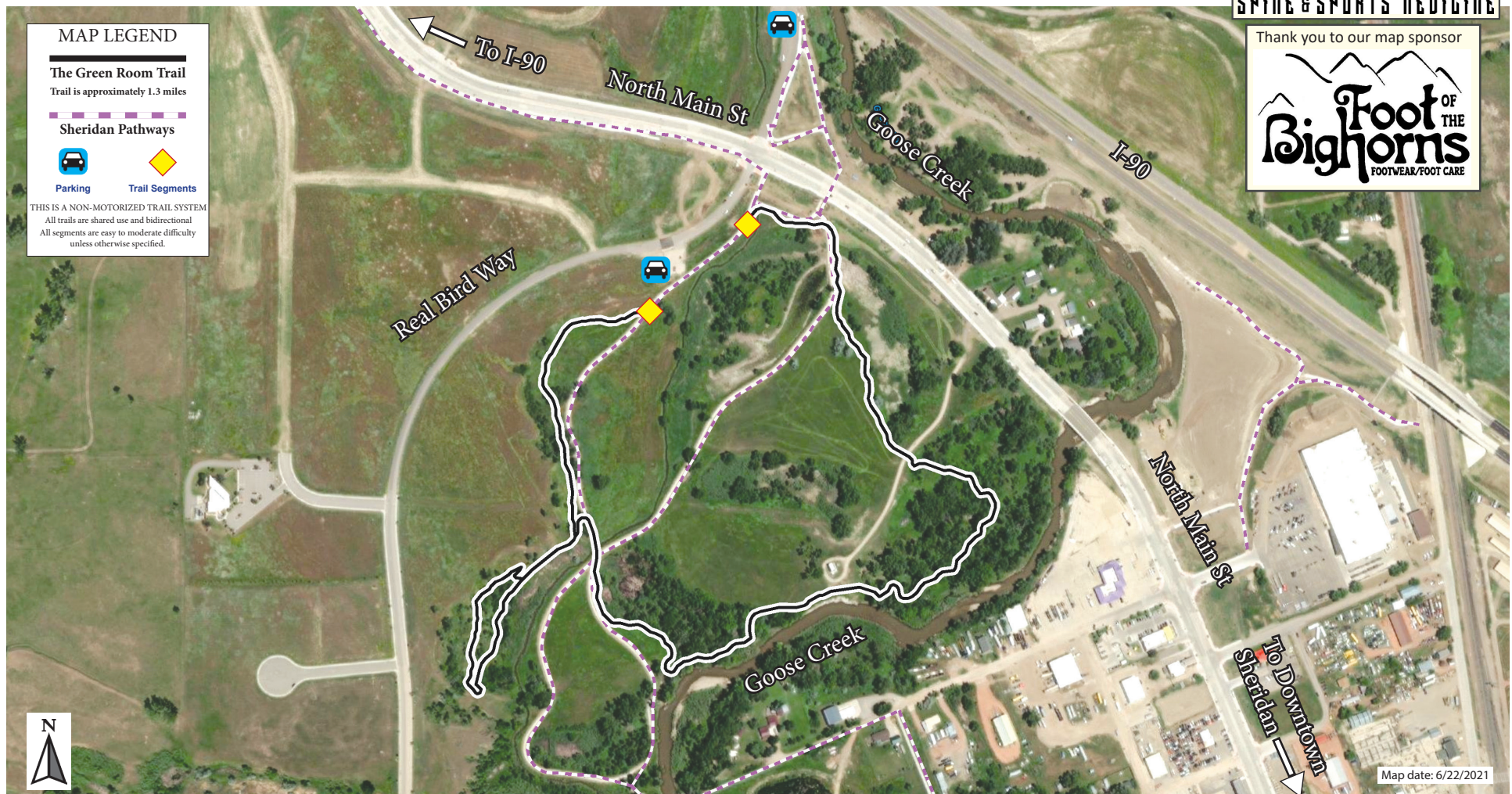
Sheridan
Community
LAND TRUST
Conservation | History | Recreation

Connecting people to land and history

Thank you to our map sponsor



Thank you to our map sponsor



MAP LEGEND

The Green Room Trail
Trail is approximately 1.3 miles

Sheridan Pathways



Parking



Trail Segments

THIS IS A NON-MOTORIZED TRAIL SYSTEM
All trails are shared use and bidirectional
All segments are easy to moderate difficulty
unless otherwise specified.

Map date: 6/22/2021