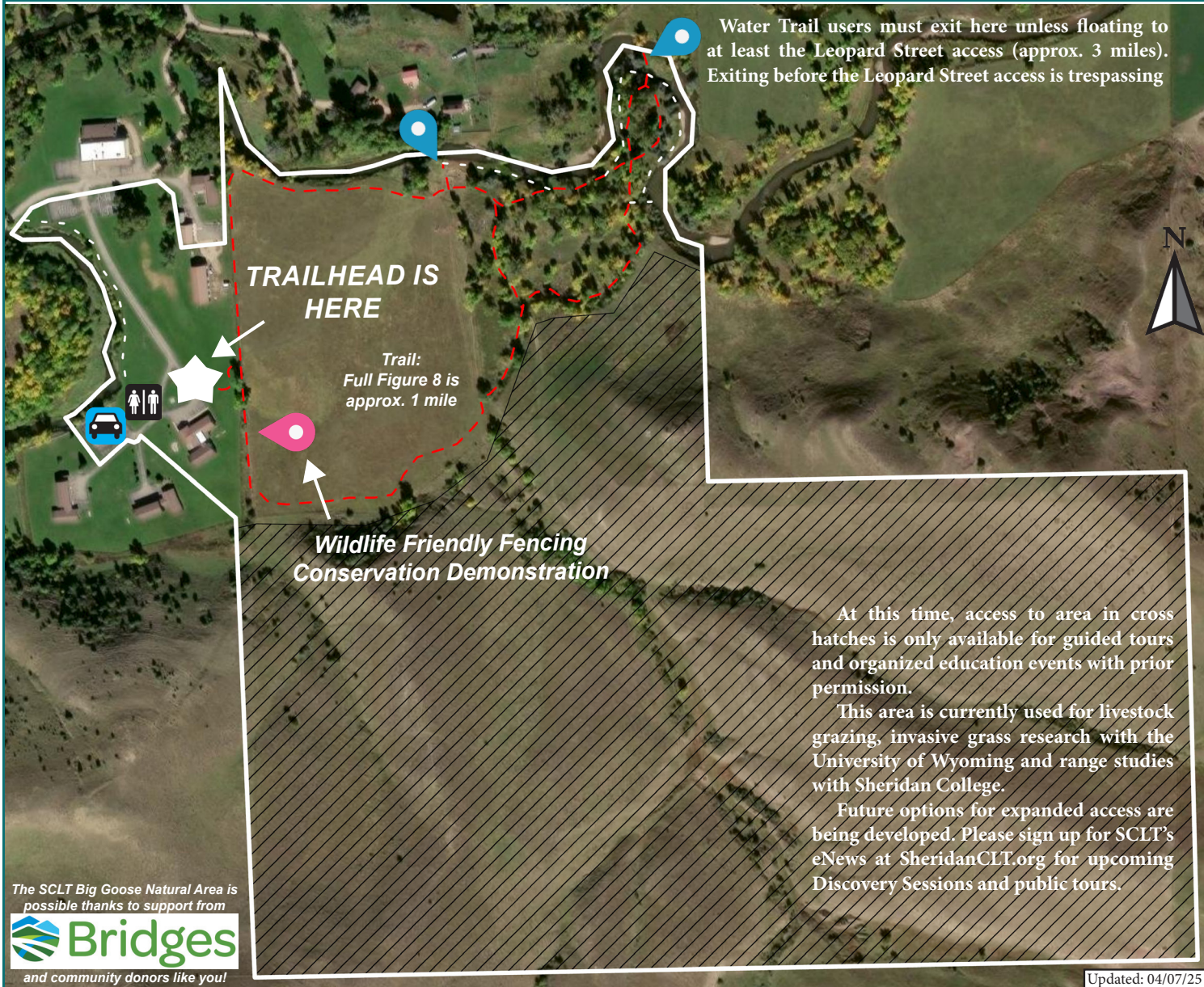


# SCLT BIG GOOSE NATURAL AREA @ Bridges



The SCLT Big Goose Natural Area is possible thanks to support from



and community donors like you!

### Map Legend

- Walking/Biking/Water Access Trail. Wider and more level.
- Primitive Trail. No bikes. Narrower and could be uneven.
- SCLT Big Goose Natural Area Property Boundary
- Tongue River Water Trail Access Site - Must use south bank
- Landmark
- Access only available for guided tours and organized education events with prior permission. Please follow us for upcoming Discovery Sessions and public tours.



Support the SCLT Big Goose Natural Area



Donate Today

### Leave No Trace Seven Principles

- Plan Ahead and Prepare
- Leave What You Find
- Travel and Camp on Durable Surfaces
- Minimize Campfire Impacts
- Respect Wildlife
- Dispose of Waste Properly
- Be Considerate of Other Visitors

The Leave No Trace Seven Principles are reprinted with the permission of the Leave No Trace Center for Outdoor Ethics. For more information, visit [www.LNT.org](http://www.LNT.org).



**Sheridan Community LAND TRUST**  
Conservation | History | Recreation

Connecting people to land and history

- Respect all trail and stream closures.
- Stay on trail - including water trail. Off-trail use prohibited.
- No eMotorcycles or motorized vehicles; eBikes are allowed.
- Pets must be leashed at all times (possible future off-leash area).
- Pet waste must be cleaned up and removed.
- Pack it in / Pack it out.
- Protect your trails: if you're leaving ruts or tracks, please head back.
- Never scare or chase livestock or wildlife. Stay a safe distance away.
- Practice "Leave No Trace."
- No fires, fireworks, firearms.
- No hunting or discharge of firearms.
- No unauthorized drone use.
- No horses (future equestrian use possible).
- Floaters must use designated put-ins & take-outs to avoid trespassing.
- Be aware of stream conditions before using water trail.
- Be courteous & kind. Leave what you find.
- Fishing rules: catch & release, lure & fly with barbless hooks only.
- Glass containers prohibited trails, water trail, and along the stream.
- Other temporary rules may apply.